

Shuttle Valves

These valves feature a shuttle that allows flow from one inlet to the outlet while blocking the other inlet.

Medium:
Air, Water or Oil

Input Pressure:
17.5 bar max.

Air Flow:
140 L/min @ 3.5 bar
270 L/min @ 7 bar

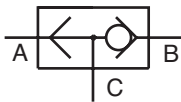
Mounting:
Direct or in-line


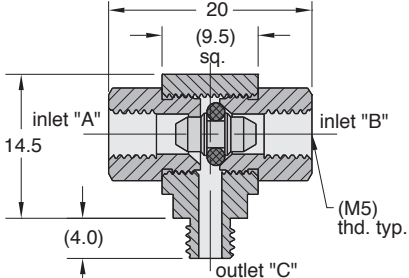
Operation:
Flow from "A" to "C" or "B" to "C"

Pressure to Shift:
35 mbar approx.


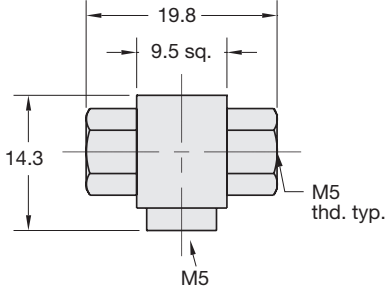
Exhaust:
Through port where pressure was last applied

Note:
Shuttle valves should not be used as a pressure selector



M5 Ports	
	

Part No.
M-MSV-1

M5 Female Ports	
	

Part No.
M-MSV-1FFF